

BLOOD GLUCOSE MONITORING SYSTEM

QUICK REFERENCE GUIDE

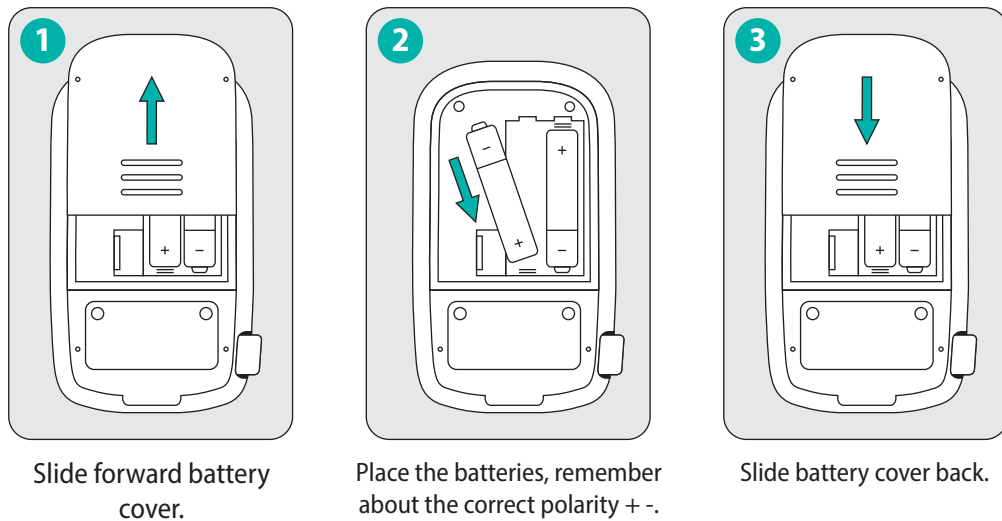


This quick instruction for use will help you to set up and prepare your glucose meter for performing a test. For detailed information, see the Instructions for use included to the set ABRA SMART BT.

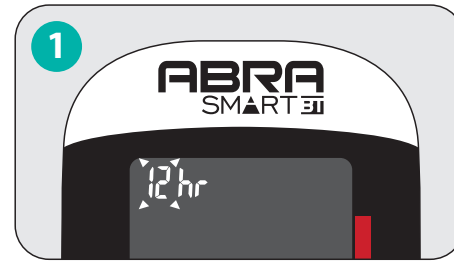
1. GLUCOSE METER DESCRIPTION



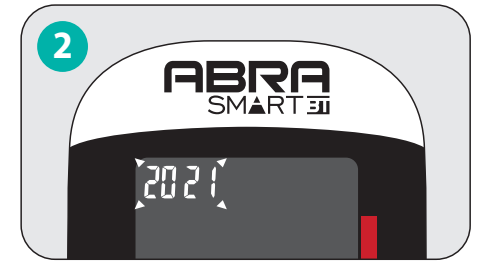
2. STARTING THE DEVICE



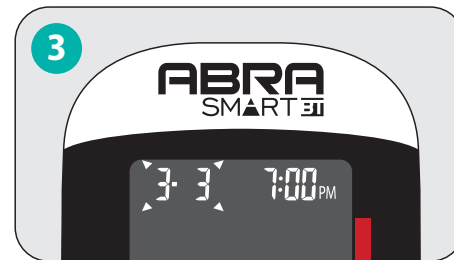
3. SETTING THE DATE AND TIME



When the unit is turned off hold ⏻ for 4 sec. Press ▲ or ▼, to select the time format. Press ⏻, to confirm the settings.



Use ▲ and ▼, buttons to set the year. Press ⏻, to confirm the settings.

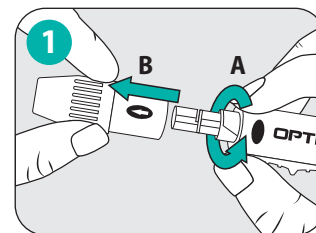


Use ▲ and ▼ buttons to set the date and month. Press ⏻ to confirm the settings.

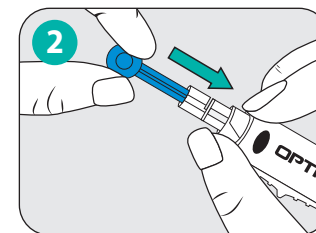


Use ▲ and ▼ to set the hour and minutes. Press ⏻ to confirm the settings.

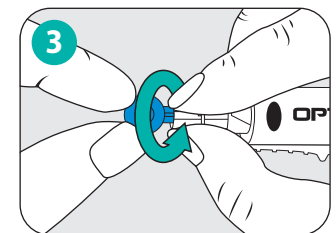
4. PREPARING THE LANCING DEVICE



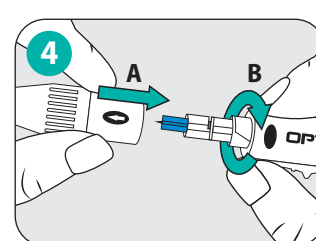
Twist and remove the cap from the lancet device.



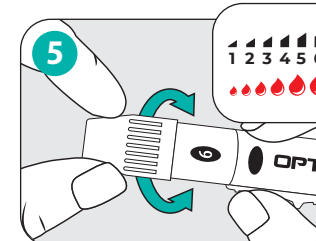
Insert the lancet into the lancet holder.



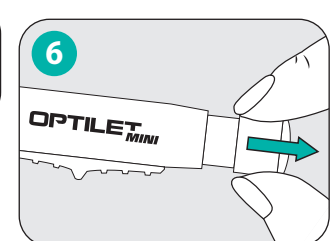
Twist and remove the lancet cap.



Put and tighten the cap back onto the lancet device.

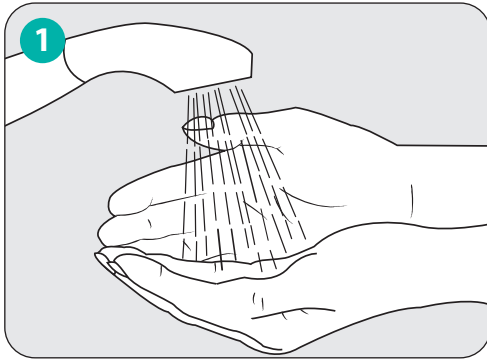


Set the puncture depth by turning the end of the cap.



Pull back the movable part until you hear a click.

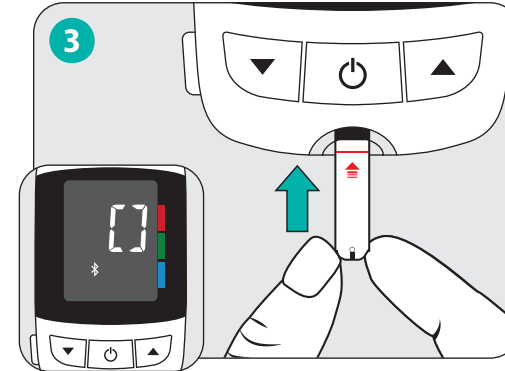
5. PERFORMING A TEST



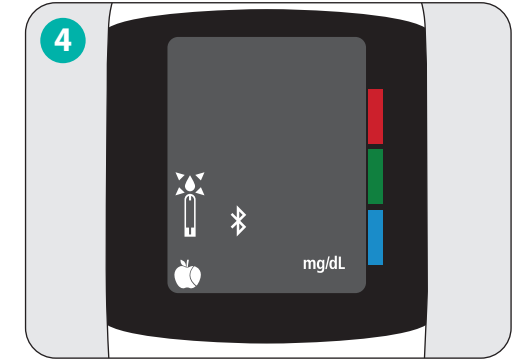
1 Before performing the test, wash your hands thoroughly and dry them.

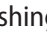
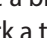
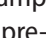




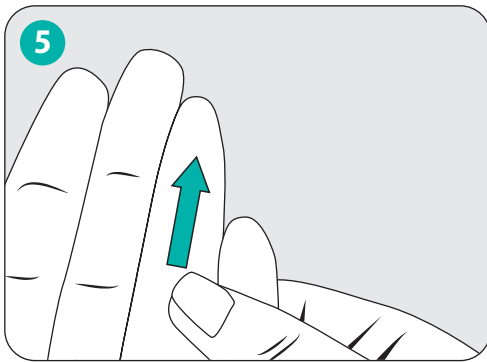
2 Put down the date when the vial has been firstly opened. Remove the strip from vial and tightly seal the cap. Put down the date of the first vial opening.



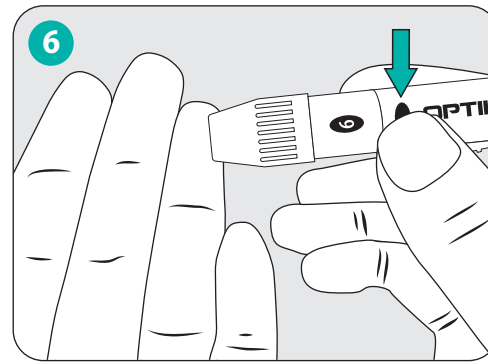
3 Insert a test strip. You will hear the beep sound and moving lines will appear on the screen.



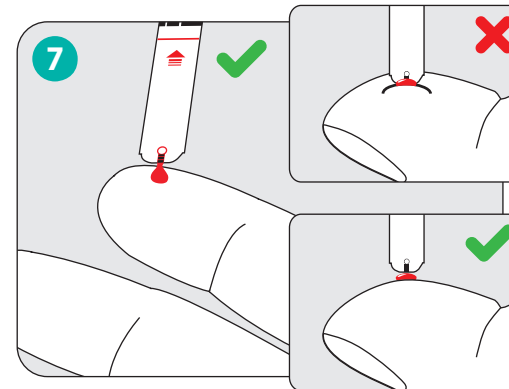
4 A flashing  means that the device is ready to take a blood sample. Use  and , to mark a test as pre-meal  or post-meal .



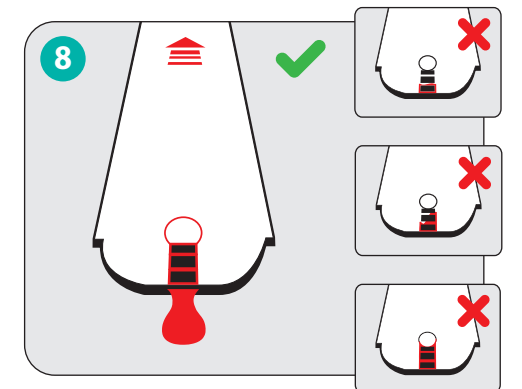
5 Massage vigorously the place of blood sampling.



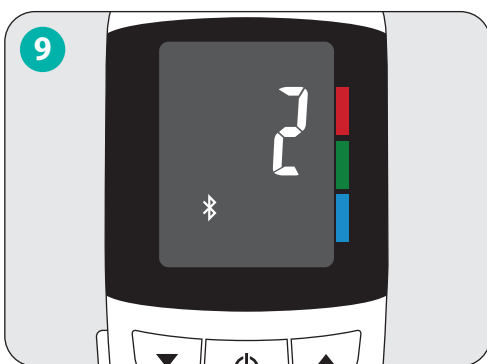
6 Firmly press the lancing device to the fingertip and press the release button. Click sound means that the puncture has been performed.



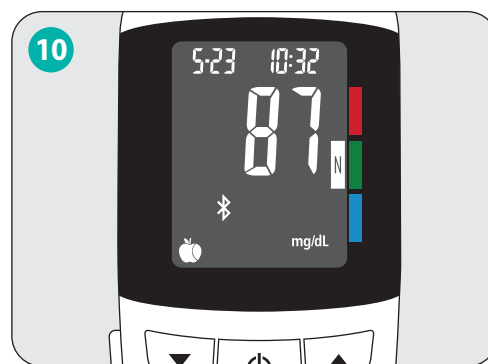
7 Apply the glucose meter with a strip to a drop of blood. Blood will be automatically sucked into the test strip.



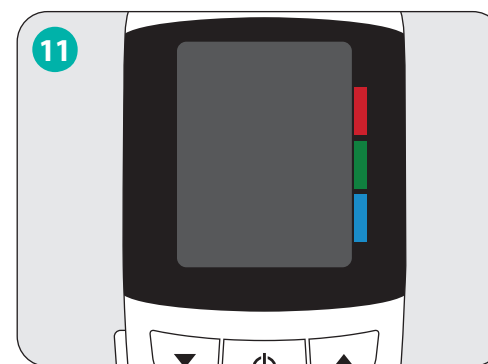
8 Make sure that the confirmation window is completely filled with blood.



9 As soon as the confirmation window will be filled with blood, the glucose meter will start counting down from 5 to 1.



10 Glucose meter will display your result and save it automatically in the memory.



11 Glucose meter will automatically turn off after removing the test strip.