

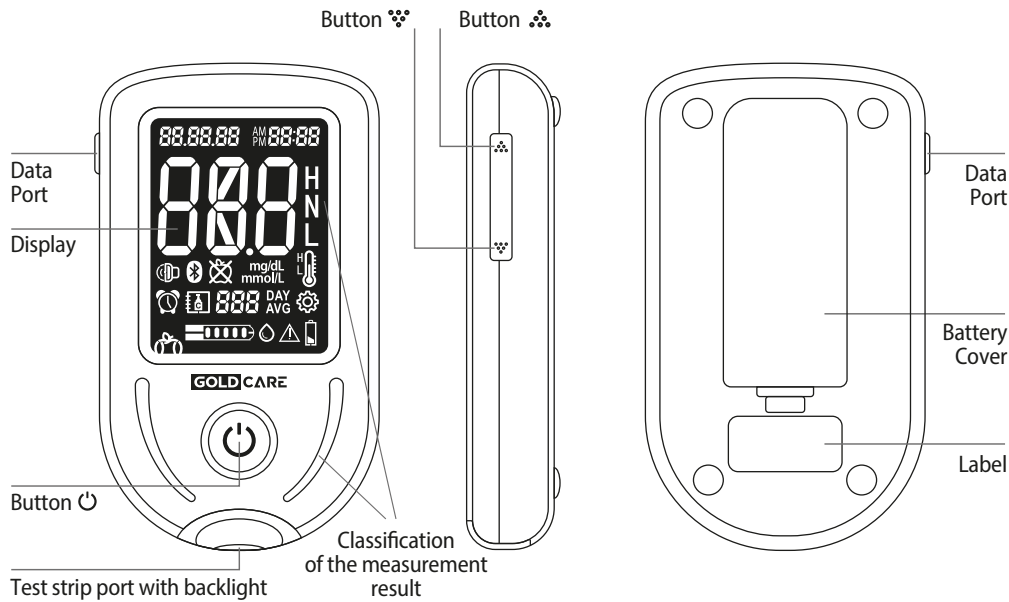
BLOOD GLUCOSE MONITORING SYSTEM

QUICK REFERENCE GUIDE

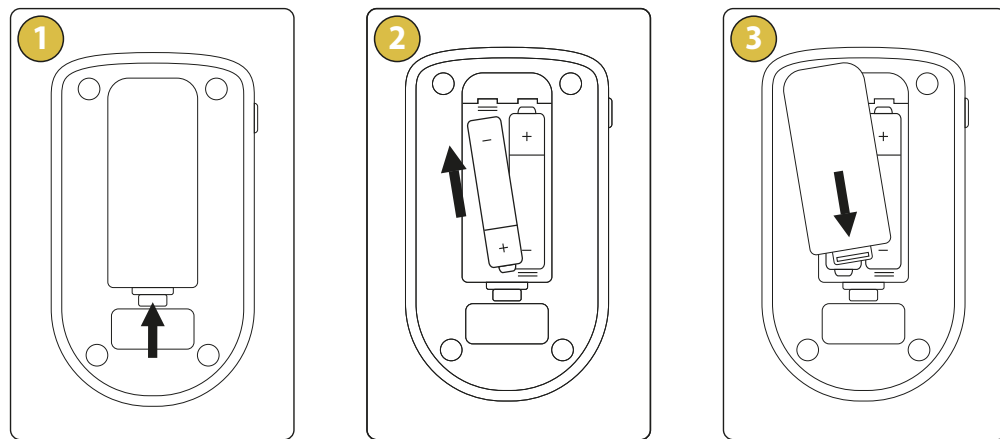
This quick instruction for use will help you to set up and prepare your glucose meter for performing a test. For detailed information, see the Instruction for use included to the set Diagnostic Gold Care.



1. GLUCOSE METER DESCRIPTION



2. INSERTING AND REPLACING THE BATTERIES

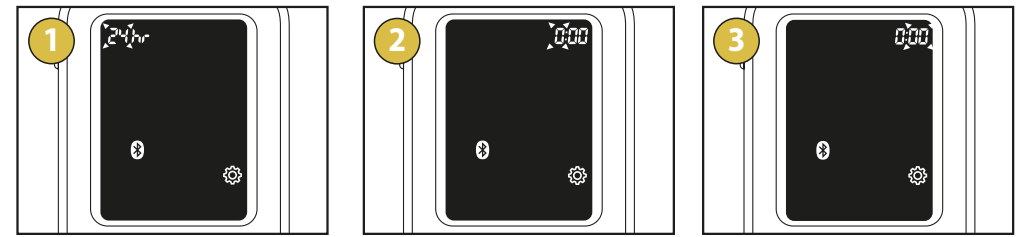


1 Open the cover by sliding the plastic notch in the battery cover forward.

2 Place the batteries, remember about the correct polarity (+ -).

3 Slide battery cover back.

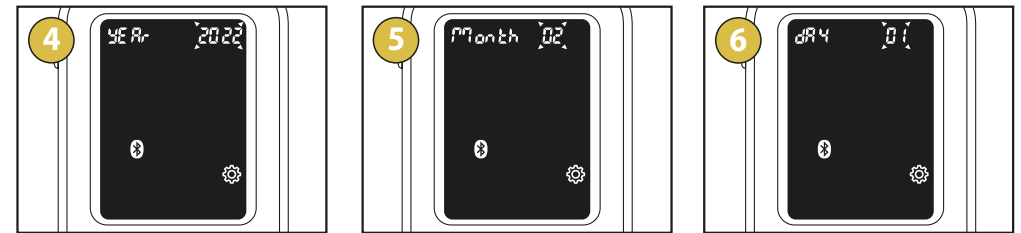
3. SETTING THE DATE AND TIME



1 Press and hold the button for 4 seconds when the power is off to enter the time format selection mode. Press or to select the 24-hour or 12-hour format. Press the button to confirm the settings.

2 Use the and buttons to select the hour. Press the button to confirm the settings.

3 Use the and buttons to select the minute. Press the button to confirm the settings.

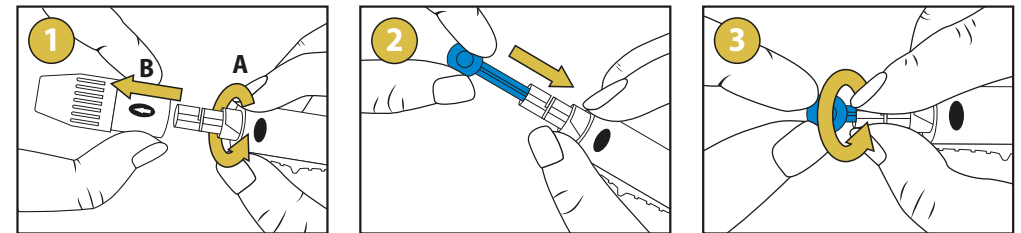


4 Use the and buttons to select the year. Press the button to confirm the settings.

5 Use the and buttons to select the month. Press the button to confirm the settings.

6 Use the and buttons to select the day. Press the button to confirm the settings.

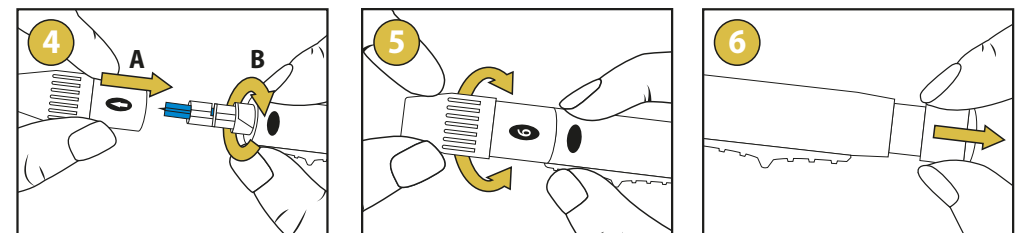
4. PREPARING THE LANCING DEVICE



1 Twist and remove the cap from the lancing device.

2 Insert the lancet into the lancet holder.

3 Carefully twist and remove the lancet cap.

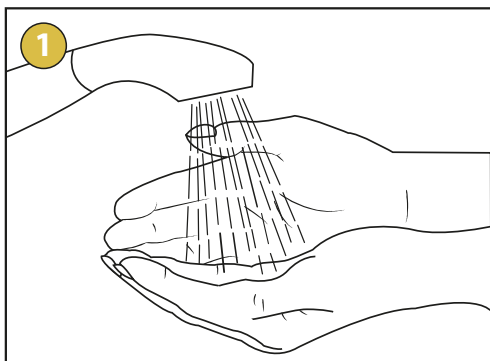


4 Put and tighten the cap back into the lancing device.

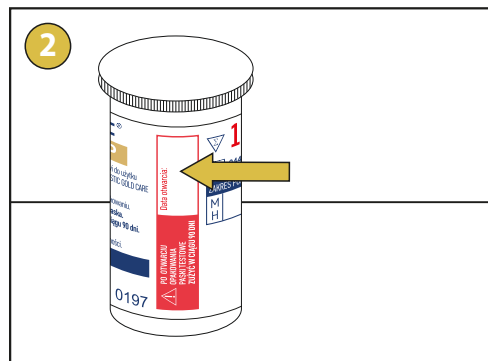
5 Set the puncture depth by turning the end of the rotating knob.

6 Pull back the pull button to the stop, then release.

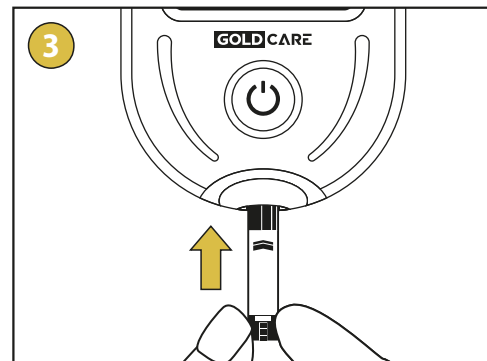
5. PERFORMING THE TEST



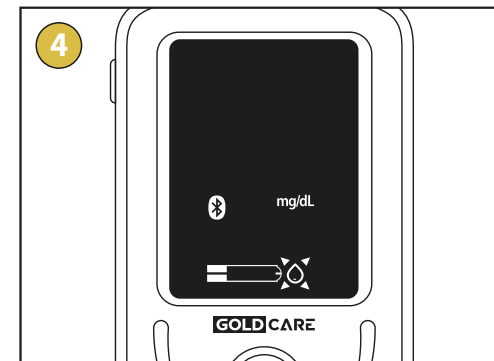
1 Before performing the test, wash your hands with soap and water and dry them.



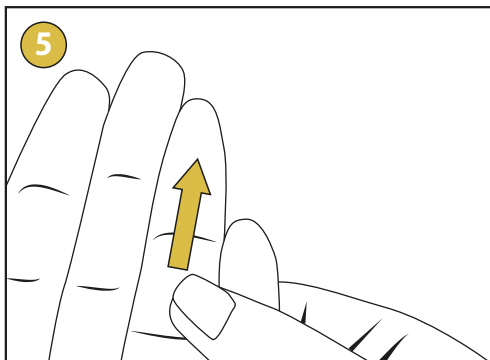
2 Put down the date when the vial has been firstly opened. Remove the strip from vial and tightly seal the cap.



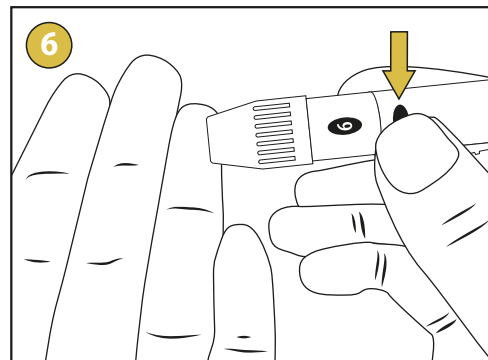
3 Insert a test strip into the glucose meter. The device beeps and the test strip symbol and flashing sign \diamond appear.



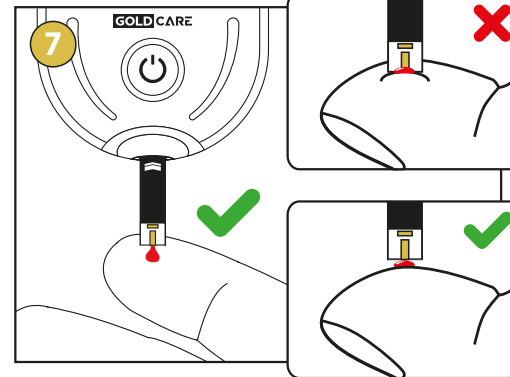
4 Use the ∇ or \blacktriangledown buttons to select the meal indicator and mark the test as a measurement before a meal \odot , after a meal \otimes , or an empty stomach \otimes .



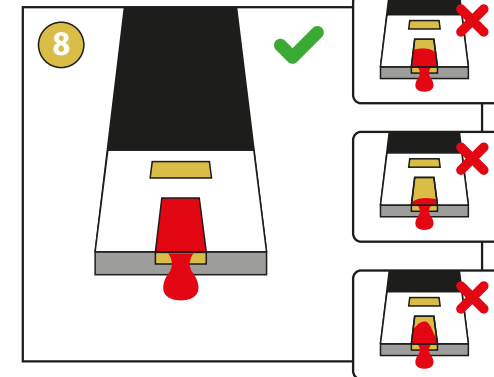
5 Massage vigorously the place of blood sampling.



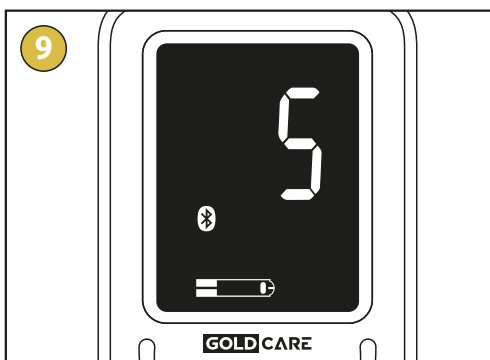
6 Apply the lancing device to the planned puncture and press the release button. Click sound means that the puncture has been performed.



7 Apply the test strip inserted into the glucose meter to a drop of blood. Blood will be automatically sucked into the test strip.



8 Make sure the yellow window is completely filled with blood.



9 As soon as the yellow window of test strip will be filled with blood, the glucose meter will start counting down from 5 to 1.



10 If you have not previously marked a measurement (Step 4), you can do it now. The apple sign will flash to remind you about it.



11 Select the ∇ or \blacktriangledown to mark the measurement as a measurement before a meal \odot , after a meal \otimes , or an empty stomach \otimes . Confirm your choice with the button \odot .

Diagnosis S.A.,
ul. Gen. W. Andersa 38A,
15-113 Białystok, Poland
www.diagnosis.pl

CE 0197